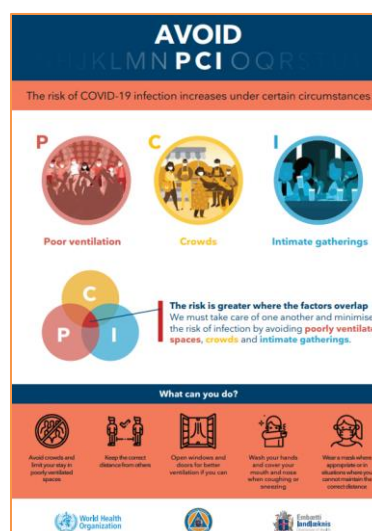


## Guidelines for camping grounds and caravan parks.

Infection Control Measures for COVID-19 in effect from July 25 2021

### Following applies to all operations/areas:

1. Visitors are **not** allowed on camping grounds, mountain huts or on organized tours if they:
  - a. Are in [quarantine](#) or taking special precautions after border screening.
  - b. Are in [isolation](#) (also while waiting for results).
  - c. Have undergone quarantine for COVID-19 with less than 14 days from discharge.
  - d. Have flue like symptoms (cold, cough, fever, head ace, bone ace, fatigue, abdominal pain, diarrhoea etc.).
2. Shared facilities and contact surfaces are [cleaned and disinfected](#) at least twice a day.
3. As of July 25 the maximum number of people that can gather is **200 individuals** in any given area, indoors or outdoors (children born 2016 and later not included). Camping grounds have to be divided accordingly as long as the rule of physical distancing is adhered to.
4. The rule of 1 meter distance between individuals not of the same household should be respected at all times as well as the rule of wearing a facemask (children born 2006 or later are exempt from the rule of wearing a facemask).
5. Easy access to hand washing stations and sanitizer needs to be secured.
6. Interaction between different tour/tourist groups should be limited as much as possible.



## Camping grounds

*Following rules apply to camping grounds and visitors with tents, campers, travel trailers, camper vans, motorhomes etc.*

1. A campground may receive three quarters (75%) of the maximum number of guests permitted. If that number exceeds 200 guests (children born 2015 and later are not included) the area can be split up into sections for 200 guests in each section and the 1-meter distance rule between individuals has to be maintained within each section and the rule of wearing a facemask (children born 2006 or later are exempt from wearing a facemask).
2. One restrooms with handwashing stations must be available in each section. The 1-meter distance rule also applies to shower facilities if showers are available. No interaction/contact should take place between individuals in different sections.
3. If showers are available, they must be separated between different sections in the area and cleaned in between. (Example: showers open first half of the day for people in section 1 and the second half of the day for people in section 2).
4. Shared facilities and contact surfaces are cleaned and disinfected at least twice a day and visitors urged to take care and obey rules on hygiene and disinfection.
5. The distance rule needs to be adhered to and notice signs placed at all service stations, reception, water fountains, sinks, restrooms and showers.
6. Minimum of 4 meters distance should be between tents, campers, travel trailers, camper vans, motorhomes etc. (According to the rules of fire protection).
7. All guests shall register under name, ID number and phone number. The information shall be kept for two weeks and deleted after that time.
8. Restrooms and showers:
  - a. Have equipment set up, at all restrooms and showers so visitors can disinfect contact surfaces like door handles and toilet seats etc. with Virkon or disinfectant.
  - b. Set up distance marks at restrooms/showers for example with floor markings and keep 2 meters between marks.
  - c. Where restrooms/showers are next to each other in close quarters every other restroom/shower must be closed.
9. Indoor and outdoor cooking facilities or areas for food consumption:
  - a. Keep liquid soap and disinfectant at every sink and guidelines visible for visitors about cleaning.
  - b. Respect the 1-meter distance rule. Make sure this distance can be kept between unrelated groups. Set up visible guidelines regarding this at all entrances.
  - c. Set up distance marks, for example floor marks, at dishwashing stations.
  - d. Remove all food items such as coffee/tea, spices etc. from common areas. Visitors are not allowed to leave food items for arriving guests or share with other. Signs must be set up with this information.
  - e. If visitors have access to cooking utensils, they must be reminded to clean them both before and after use.

- f. Remind guests to disinfect tables and contact surface on chairs before seated.

10. Other services:

- a. Guest are requested to respect the 1-meter distance rule and information signs about personal hygiene (washing of hands, coughing in one's elbow, avoiding crowds) is to be set up.
- b. Set up distance marks where appropriate and possible.
- c. Chemicals for disinfection of contact surface must be available (sanitizer and Virkon).
- d. Remove all playing cards, boardgames, books, papers etc that visitors have access to.
- e. Waste from each tent/house/unit should be placed in closed bags in trash cans in each section.

11. Small guesthouses at camping grounds:

- a. Only rented out to individuals or families/groups that share the same household.

## **Travel trailer areas (permanent parking for shorter or longer periods)**

1. A trailer area may receive three quarters (75%) of the maximum number of guests permitted. If that number exceeds 200 guests (children born 2016 and later are not included) the area can be split up into sections for 200 guests in each section and the 1-meter distance rule between individuals has to be maintained within each section and the rule of wearing a facemask (children born 2006 or later are exempt from wearing a facemask).
2. Two restrooms with handwashing stations must be available in each section. The 1-meter distance rule also applies to shower facilities if showers are available. No interaction/contact should take place between individuals in different sections.
3. If showers are available, they must be separated between different sections in the area and cleaned in between. (Example: showers open first half of the day for people in section 1 and the second half of the day for people in section 2).
4. Shared facilities and contact surfaces are cleaned and disinfected at least twice a day and visitors urged to take care and obey rules on hygiene and disinfection.
5. The distance rule needs to be adhered to and notice signs placed at all service stations, reception, water fountains, sinks, restrooms and showers.
6. Minimum of 4 meters distance should be between campers, travel trailers, camper vans, motorhomes etc. (According to the rules of fire protection).
7. All guests shall register under name, ID number and phone number. The information shall be kept for two weeks and deleted after that time.
8. Restrooms and showers:
  - a. Have equipment set up, at all restrooms and showers so visitors can disinfect contact surfaces like door handles and toilet seats etc. with Virkon or disinfectant.
  - b. Set up distance marks at restrooms/showers for example with floor markings and keep 2 meters between marks.
  - c. Where restrooms/showers are next to each other in close quarters every other restroom/shower should be closed if possible.
9. Indoor and outdoor cooking facilities or areas for food consumption:
  - a. Keep liquid soap and disinfectant at every sink and guidelines visible for visitors about cleaning before and after cooking and eating.
  - b. Guests requested to respect the 1-meter distance rule, ensure that while dining this can be maintained between individuals that do not share the same household.
  - c. Set up distance marks, for example floor marks, at dishwashing stations.
  - d. Remove all food items such as coffee/tea, spices etc. from common areas. Visitors are not allowed to leave food items for arriving guests or share with other. Signs must be set up with this information.
  - e. If visitors have access to cooking utensils, they must be reminded to clean those both before and after use.
  - f. Remind guests to disinfect tables and contact surface on chairs before seated.

## 10. Other services:

- a. Respect the 1-meter distance rule. Posters with instructions to be set up.
- b. Set up distance marks where appropriate and possible.
- c. Chemicals for disinfection of contact surface must be available (sanitizer and Virkon).
- d. Remove all playing cards, boardgames, books, papers etc that visitors have access to.
- e. Waste should be placed in closed bags in trash cans in each section.

---

### Information about COVID-19

1. [www.covid.is](http://www.covid.is)
2. [www.landlaeknir.is](http://www.landlaeknir.is)
3. [www.ferdamalastofa.is](http://www.ferdamalastofa.is)

### Further information

For further information please contact the following:

1. [upplysingar@ferdamalastofa.is](mailto:upplysingar@ferdamalastofa.is)
2. Live chat: [www.covid.is](http://www.covid.is) This chat is intended for general information regarding COVID-19 in Iceland.

These rules apply until August 13 2021

We encourage all tourism operators to participate in the project Clean & Safe. All information can be found in the [website of the Icelandic Tourist Board](#).

